



## The Dune Farmers Platform

### Aim Duinboeren:

To maintain and enhance the economic performance of their farms, while respecting environment, nature and landscape.

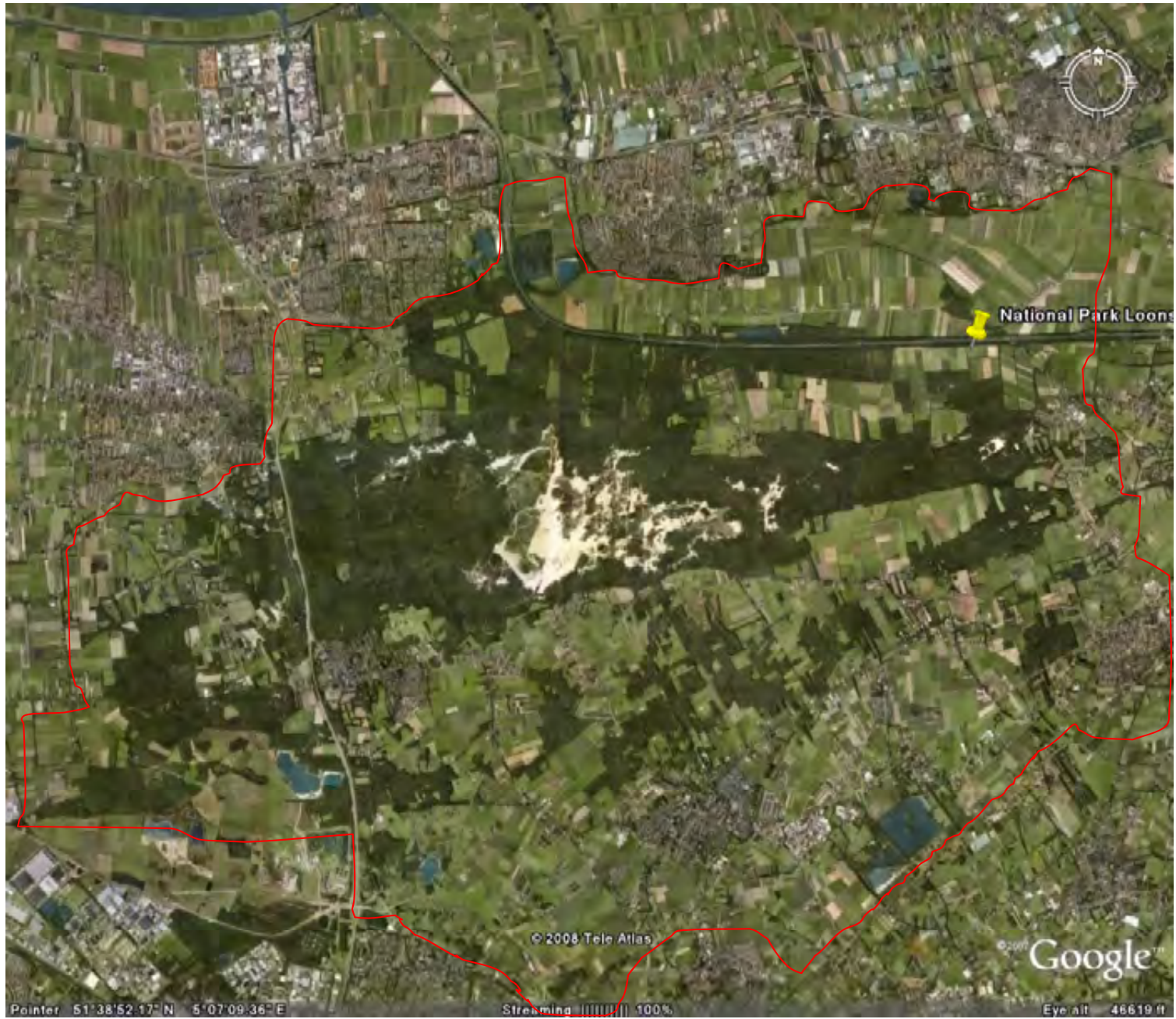


## Contents:

- Start of Duinboeren
- Organization
- Projects
  - Innovations on the farms
  - Area-based
- Nat. Park: “Treath or a challenge?”

# National park The Loonse en Drunense Duinen





National Park Loons

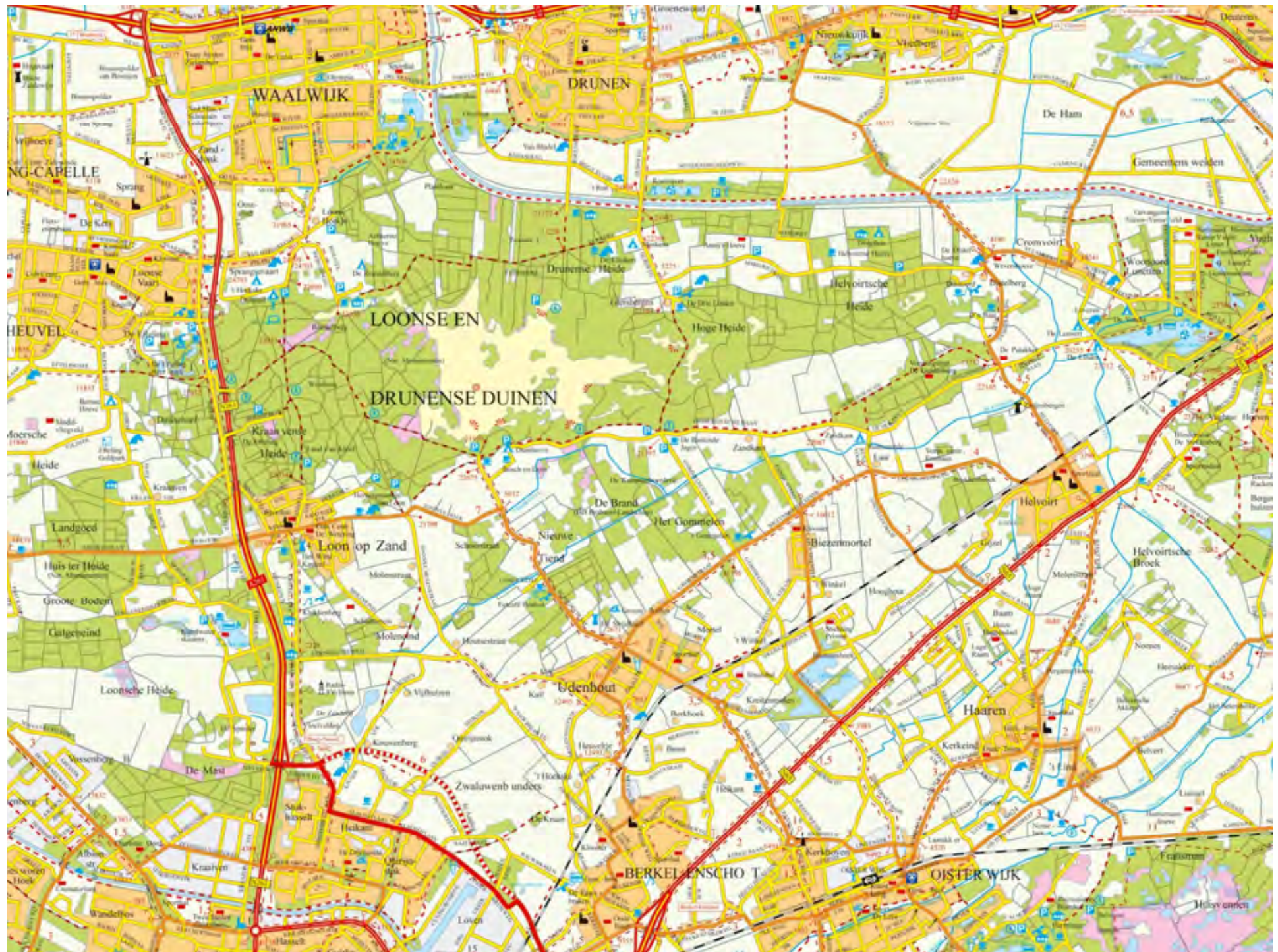
© 2008 Tele Atlas

© 2007 Google

Pointer 51°38'52.17" N 5°07'09.36" E

Streaming 100%

Eye alt 46619 ft



# How they got started

- 1992: Minister of Agriculture gave Loonse en Drunense Duinen the status of National Park in formation
- Farmers felt threatened by the National Park
- Question how to cope with the changes in the area
- They decided to act in an pro-active way

# Organization

- The board is a group seven farmers from the region
- Supported by a small group of employees
- Based on projects
- Projects are direct result of ideas and initiatives of the farmers

# Innovations on the farms

- Duinboeren en Daden
  - Effective phosphate management
- Biodiversity
  - Use of biodiversity on the farm
- Regional products
- Dairy farming and Climate
  - Reduce the emission of Laughing-gas, ammonia,
- Land use
- Schoon water / Clean Water
  - Good pesticides use



**Stichting Duinboeren**  
samen sterk voor een gezonde toekomst



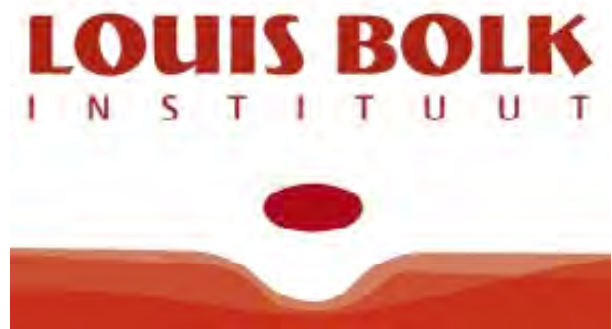
# Studygroups, demonstration and experiments

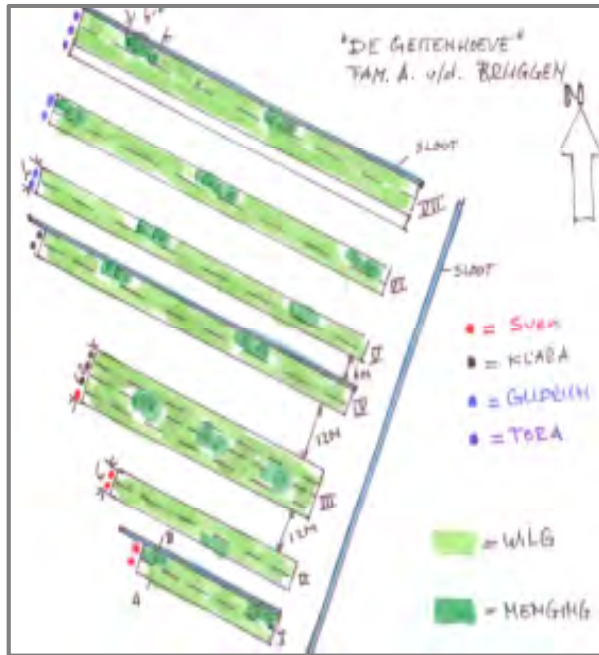


# Projects

- Area-based
  - Parcel exchange with different targets
  - In areas with a small group of farmers
  - Brokkenbroek
- Fodder trees

# Fodder trees as a third crop on dairy farms in the Netherlands





Februari 2011

First in April 2011: planting of 4 willow clones (Sven, Klara, Gudrun and Tora)  
Selection based on production, disease resistance and palatability for animals



April 2011



September 2012

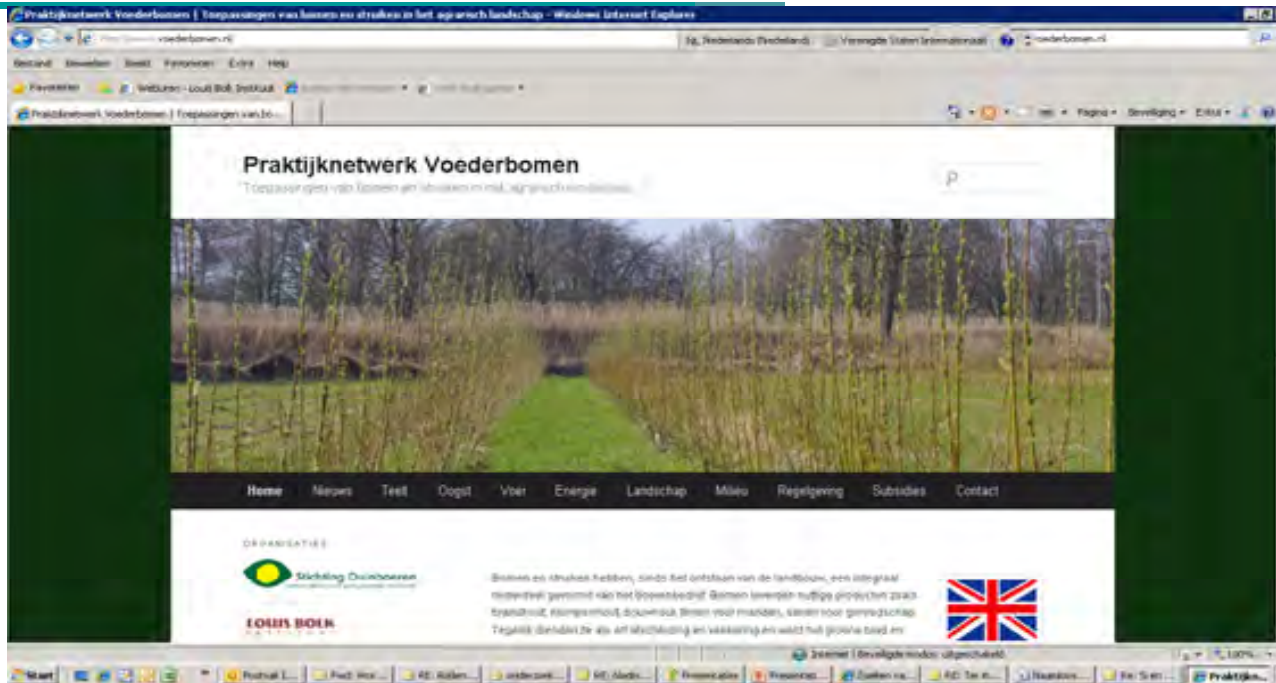
# Results harvesting Silage making



Look at [www.voederbomen.nl](http://www.voederbomen.nl)  
“Oogst” for film

# More information

[www.voederbomen.nl](http://www.voederbomen.nl)



## *Proposition*

*At the moment the general policy is too much regulating and not stimulating for tree cultivation as a crop on agricultural land.*

# Threats and challenges

## Challenges

- Diversification on farms
  - Tourism
  - Regional products
- Landscape development en maintenance
- Working together with Other landowners in the region

# Threats

- Decreasing number of Dairy farmers
- Perspective for Dairy farmers ( land and development)
- Decrease of diversity of farms
- Due to the high price for agriculturale land only the strong tree nursery will survive in the region





Questions?